

The Northland Modular Home Series

Rancher Homes

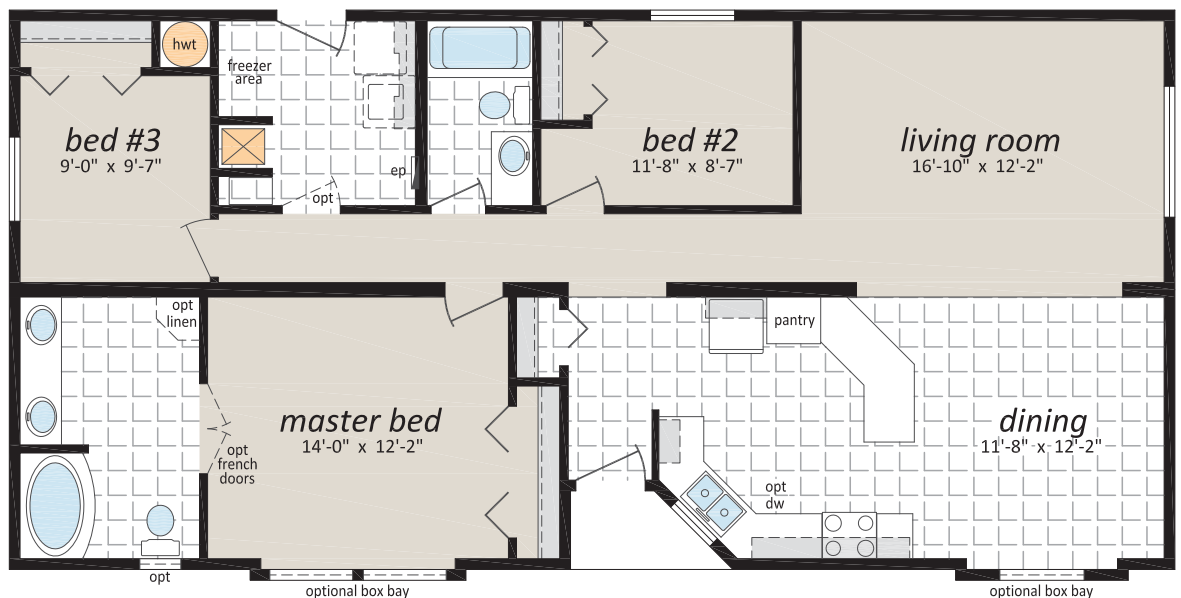
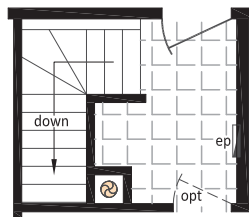
Self-Contained Modular Home



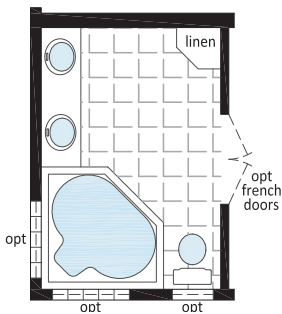
Some exterior features may be optional or done by others on site.

"The Parkview" - NSM-119A (F)
26' x 54', 1,404 sq. ft.
(Crawl Space)

Proposed Stairway Location for Optional Basement Model



Optional Ensuite



www.regenthomes.ca

Follow us:

