

# The Northland Modular Home Series

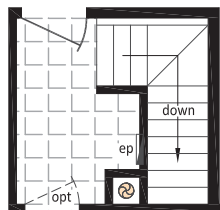
## Rancher Homes

Self-Contained Modular Home

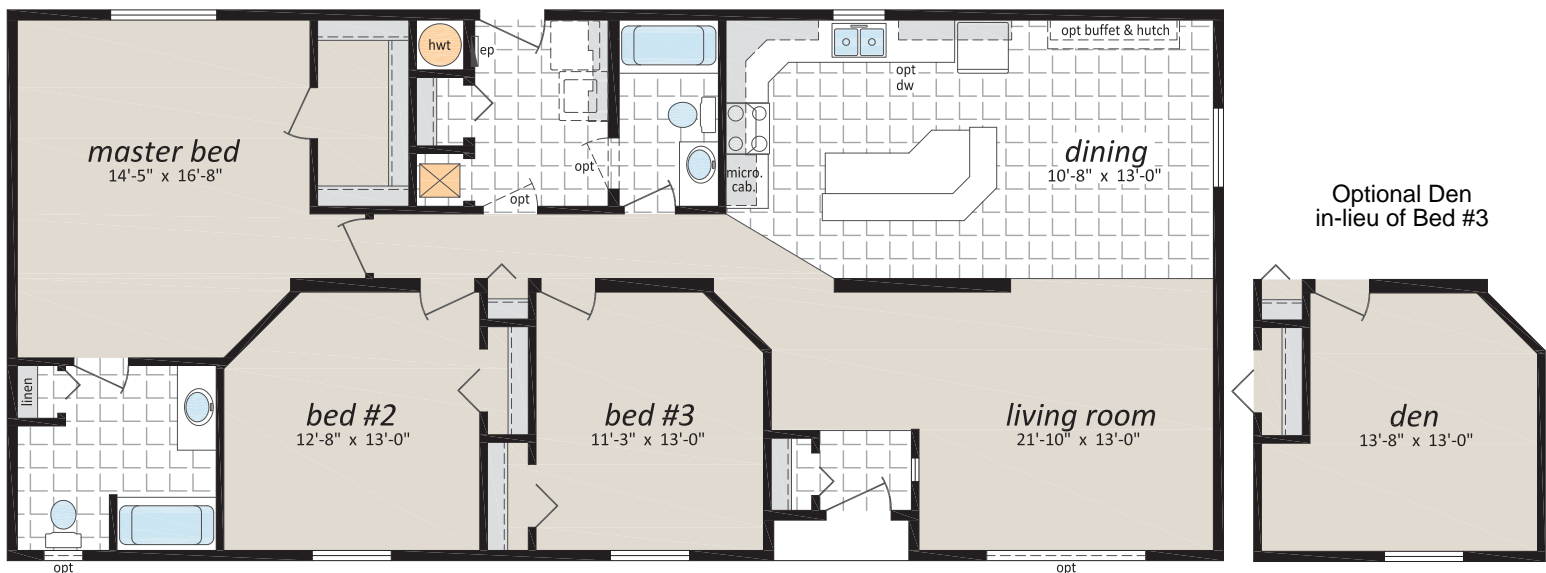


Some exterior features may be optional or done by others on site.

### "The Longview" - NSM-739A (F) 27'6" x 60', 1,650 sq. ft. (Crawl Space)



Proposed Stairway  
Location for Optional  
Basement Model



[www.regenthomes.ca](http://www.regenthomes.ca)

Follow us:

